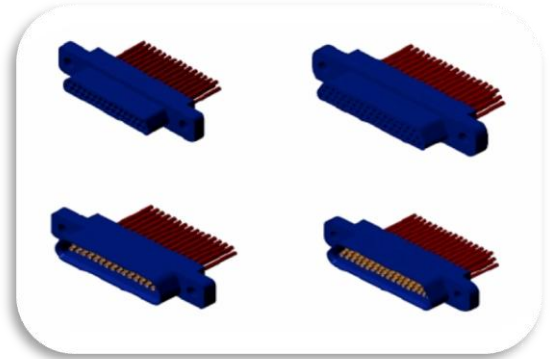


**MD 系列微矩形电连接器**

**产品特点**

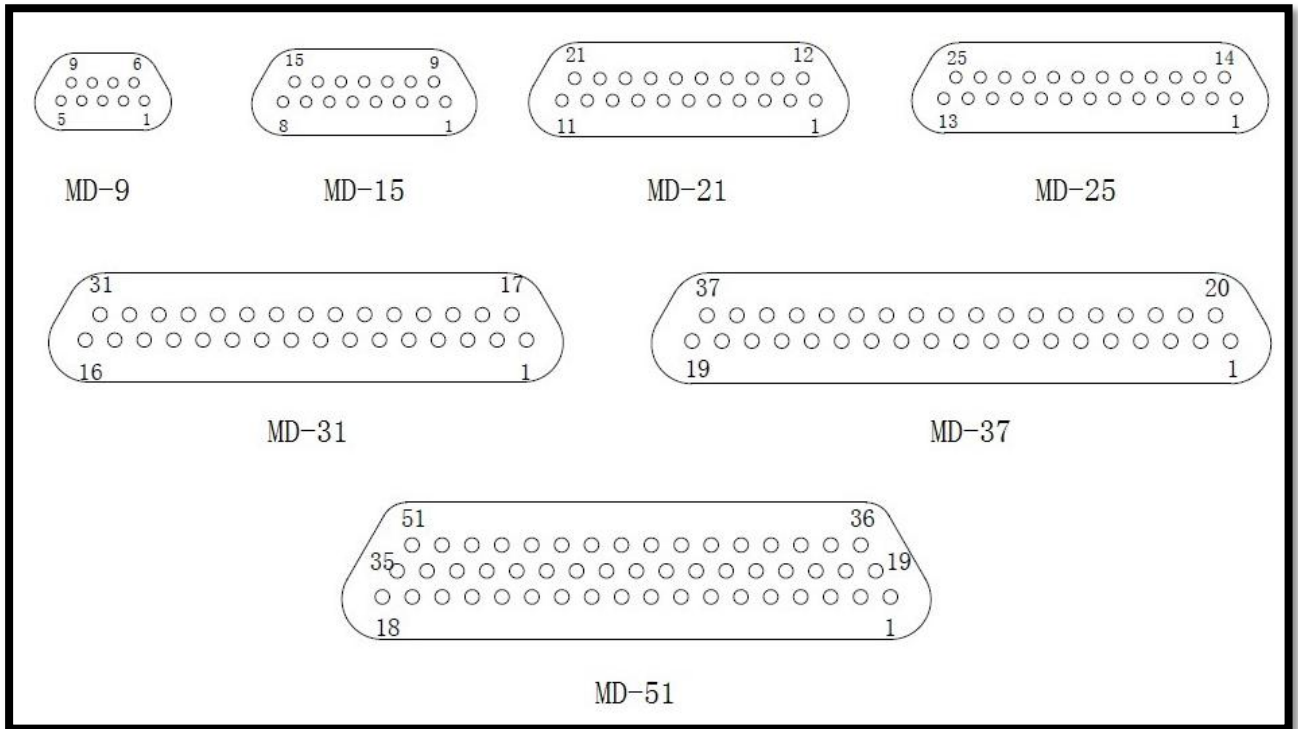
- 产品规格有9、15、21、25、31、37、51 芯七种规格
- 采用绞线式弹性插针（麻花针），接点密度高
- 导线截芯面积 $0.1\text{mm}^2 \sim 0.15\text{mm}^2$ ，此外，还可采用 $0.07\text{mm}^2$  的导线
- 接触件规格为24#，尾端端接方式有压接导线、直插印制板、弯插印制板三种
- 产品性能符合GJB2446的要求
- 本系列产品的安装附件按订货要求单独选购



**产品规范**

材料及表面镀覆	
塑料壳体	PBT, 玻纤增强 30%, UL94-V0, 蓝色
弹性插针	铍青铜, 镀金
针管	磷青铜, 镀金
插孔	磷青铜, 镀金
安装附件	不锈钢或铝合金/铜合金, 镀镍
机械性能	
接触件最大插入力	0.8N
接触件最小分离力	0.3N
振动	10Hz ~ 2000Hz 196m/s <sup>2</sup>
随机振动	功率谱密度 0.4G <sup>2</sup> /Hz 总加速度均方根值 23.1G
冲击	735m/s <sup>2</sup> 11ms
机械寿命	1000 次
电气性能	
额定电流	3A
接触电阻	≤ 10mΩ
绝缘电阻	≥ 5000MΩ
介质耐压	800V
环境性能	
环境温度	-55℃~ +125℃

**产品型谱**



注：从插头对接端看

**产品应用领域**

- 小型军用电子设备
- 工业级移动终端
- 高性能工业计算机
- 便携式一体机
- 便携式测试仪器
- 便携式数据采集器
- 激光器模块

**订货代码**

MD
-
9
P
N
-
J

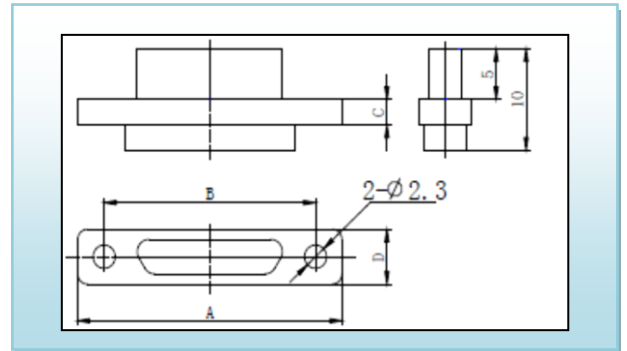
①
②
③
④
⑤

- ① 主称代号：MD
- ② 接触件数目：9、15、21、25、31、37、51
- ③ 连接器类型：T - 插头，Z - 插座
- ④ 尾端形式：无字母 - 压接，N - 直插印制板，W - 弯插印制板；
- ⑤ 改型或尾端变更：J - 尾端插脚的网格间距 1.27×2.54

**MD压接基本型**

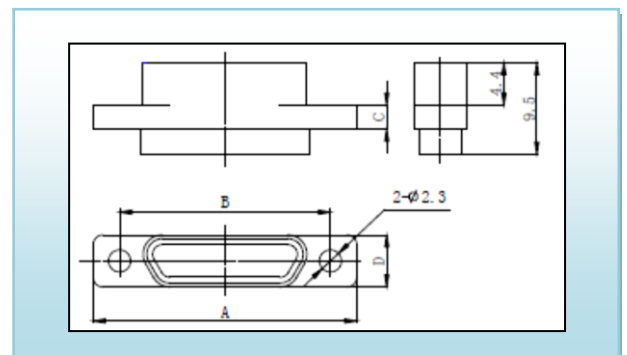
■ 插头

订货标志	A	B	C	D
MD-9T	19.8	14.3	2.5	5.4
MD-15T	23.6	18.2	2.5	5.4
MD-21T	27.5	22	2.5	5.4
MD-25T	30	24.5	2.5	5.4
MD-31T	33.7	28.3	2.5	5.4
MD-37T	37.5	32.2	2.5	5.4
MD-51T	36.3	30.8	2.3	6.5



■ 插座

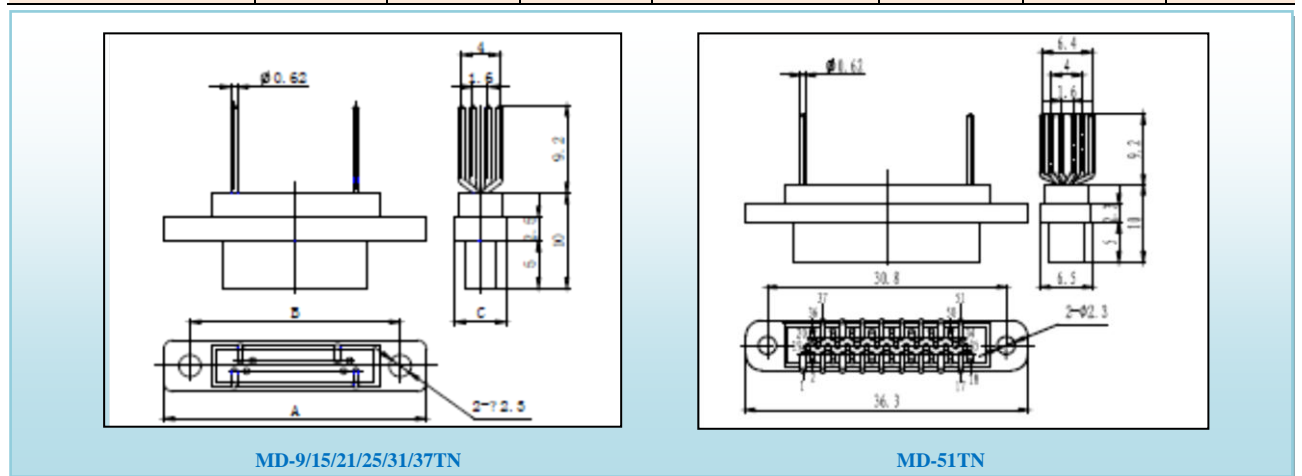
订货标志	A	B	C	D
MD-9Z	19.8	14.3	2.5	5.4
MD-15Z	23.6	18.2	2.5	5.4
MD-21Z	27.5	22	2.5	5.4
MD-25Z	30	24.5	2.5	5.4
MD-31Z	33.7	28.3	2.5	5.4
MD-37Z	37.5	32.2	2.5	5.4
MD-51Z	36.3	30.8	2.3	6.5



**MD直插印制板N型**

■ 插头

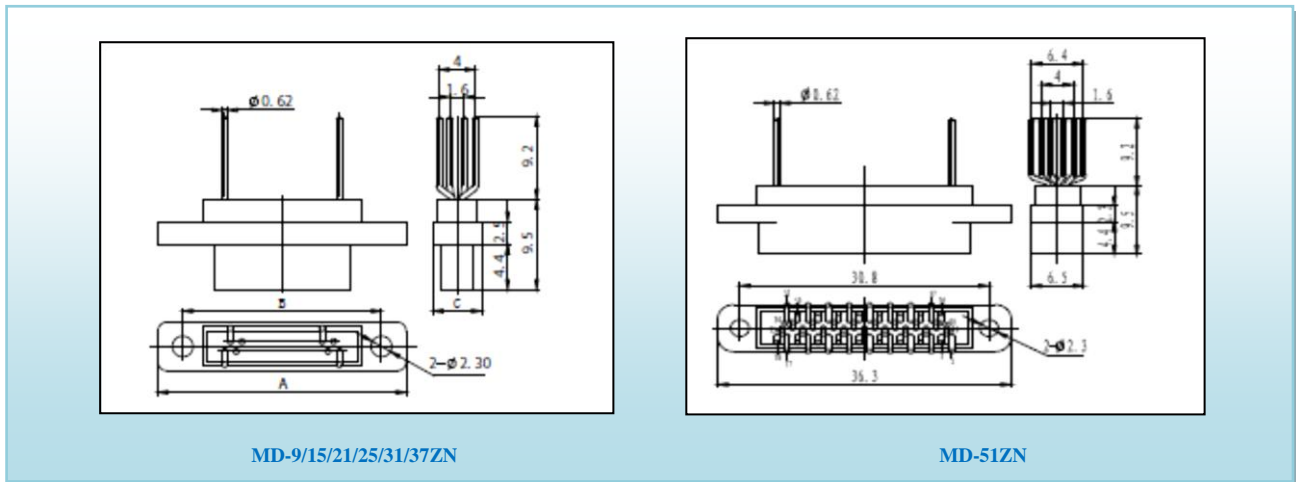
订货标志	A	B	C	订货标志	A	B	C
MD-9TN	19.8	14.3	5.4	MD-25TN	30	24.5	5.4
MD-15TN	23.6	18.2	5.4	MD-31TN	33.7	28.3	5.4
MD-21TN	27.5	22	5.4	MD-37TN	37.5	32.2	5.4



深圳市科宝讯电子有限公司 Shenzhen Copocom electronics co., Ltd  
 地址 Add: 深圳市宝安区福永街道福园一路高新技术工业园 1 栋 No.1Build,Fuyong High-tech industry park, No.1 Fuyuan Road, Baoan District Shenzhen,China  
 电话 Tel:+86-0755-36695179  
 传真 Fax:+86-0755-36695180  
 邮箱 Email:sales@copocom.com  
 公司官网 Website: <http://www.copocom.com>

■ 插座

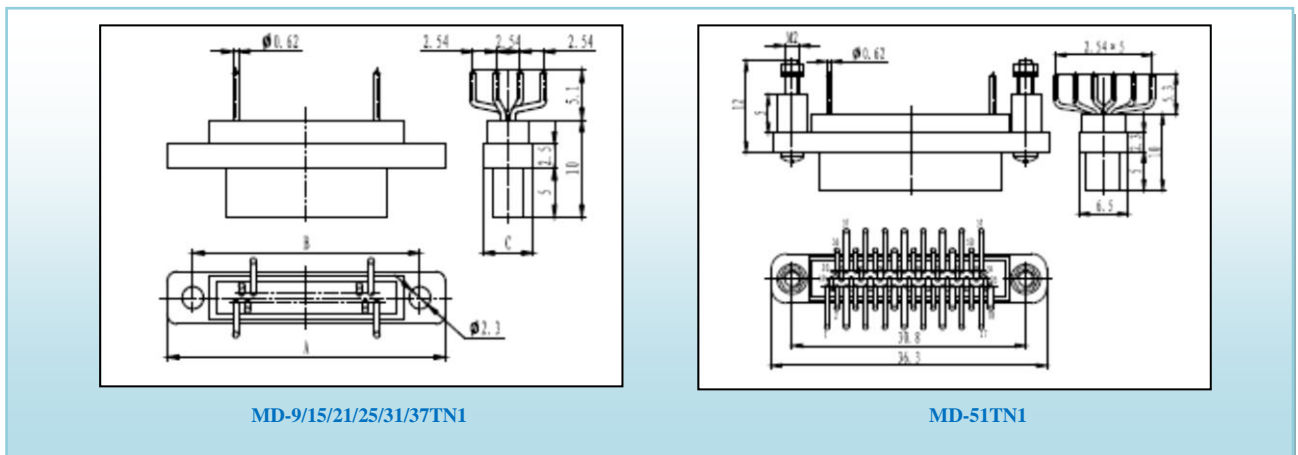
订货标志	A	B	C	订货标志	A	B	C
MD-9ZN	19.8	14.3	5.4	MD-25ZN	30	24.5	5.4
MD-15ZN	23.6	18.2	5.4	MD-31ZN	33.7	28.3	5.4
MD-21ZN	27.5	22	5.4	MD-37ZN	37.5	32.2	5.4



**MD直插印制板N1型**

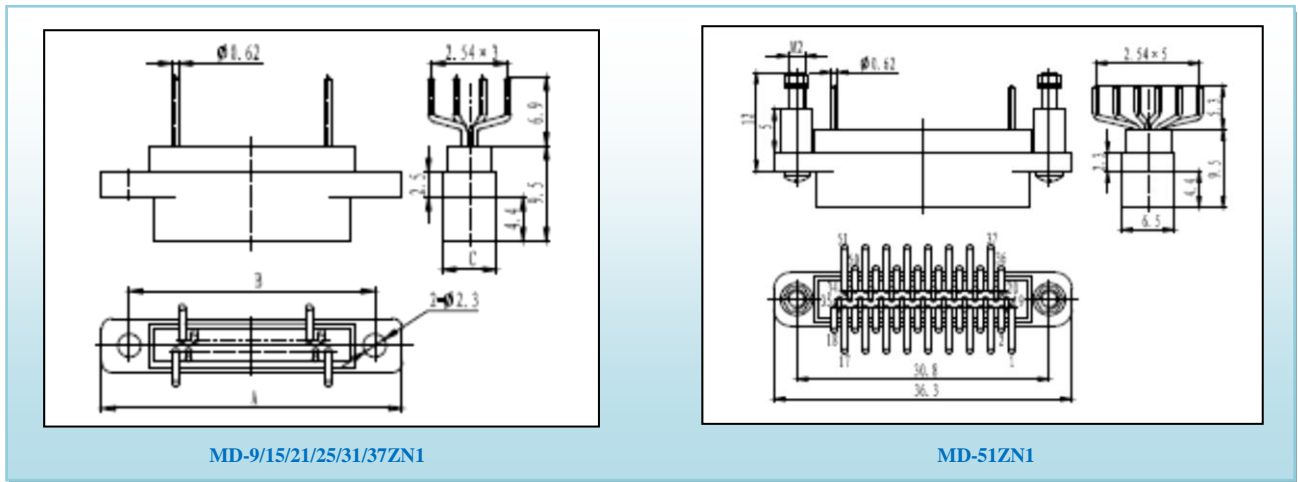
■ 插头

订货标志	A	B	C	订货标志	A	B	C
MD-9TN1	19.8	14.3	5.4	MD-25TN1	30	24.5	5.4
MD-15TN1	23.6	18.2	5.4	MD-31TN1	33.7	28.3	5.4
MD-21TN1	27.5	22	5.4	MD-37TN1	37.5	32.2	5.4



■ 插座

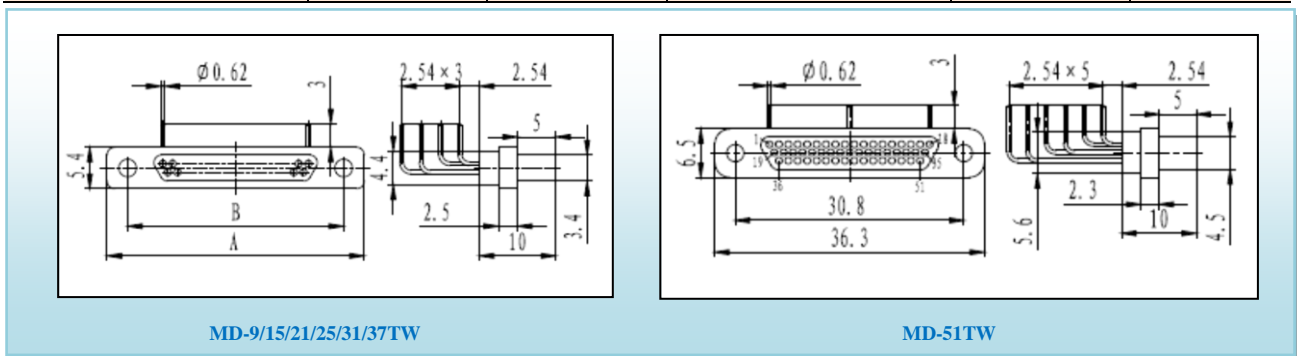
订货标志	A	B	C	订货标志	A	B	C
MD-9ZN1	19.8	14.3	5.4	MD-25ZN1	30	24.5	5.4
MD-15ZN1	23.6	18.2	5.4	MD-31ZN1	33.7	28.3	5.4
MD-21ZN1	27.5	22	5.4	MD-37ZN1	37.5	32.2	5.4



MD直插印制板W型

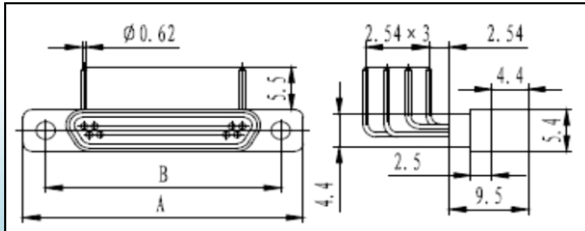
■ 插头

订货标志	A	B	订货标志	A	B
MD-9TW	19.8	14.3	MD-25TW	30	24.5
MD-15TW	23.6	18.2	MD-31TW	33.7	28.3
MD-21TW	27.5	22	MD-37TW	37.5	32.2

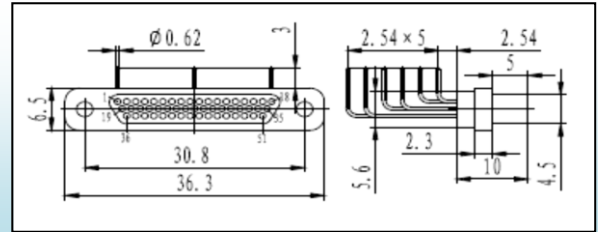


■ 插座

订货标志	A	B	订货标志	A	B
MD-9ZW	19.8	14.3	MD-25ZW	30	24.5
MD-15ZW	23.6	18.2	MD-31ZW	33.7	28.3
MD-21ZW	27.5	22	MD-37ZW	37.5	32.2



MD-9/15/21/25/31/37ZW

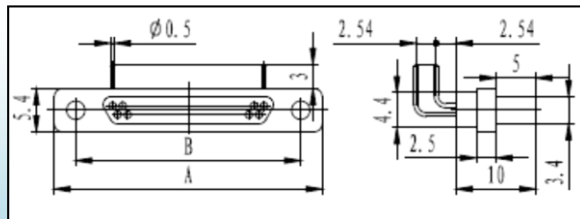


MD-51ZW

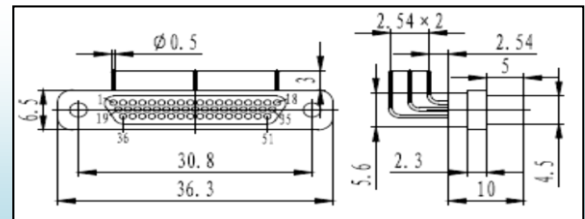
MD直插印制板W-J型

■ 插头

订货标志	A	B	订货标志	A	B
MD-9TW-J	19.8	14.3	MD-25TW-J	30	24.5
MD-15TW-J	23.6	18.2	MD-31TW-J	33.7	28.3
MD-21TW-J	27.5	22	MD-37TW-J	37.5	32.2



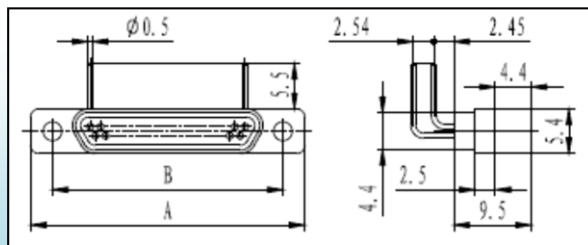
MD-9/15/21/25/31/37TW-J



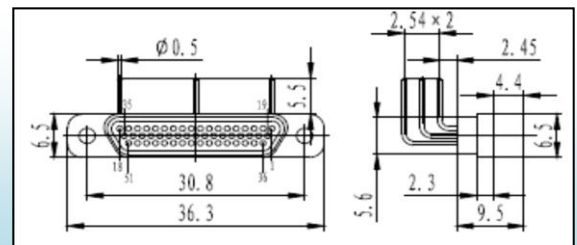
MD-51TW-J

■ 插座

订货标志	A	B	订货标志	A	B
MD-9ZW	19.8	14.3	MD-25ZW	30	24.5
MD-15ZW	23.6	18.2	MD-31ZW	33.7	28.3
MD-21ZW	27.5	22	MD-37ZW	37.5	32.2



MD-9/15/21/25/31/37ZW-J



MD-51ZW-J

深圳市科宝讯电子有限公司 Shenzhen Copocom electronics co., Ltd

地址 Add: 深圳市宝安区福永街道福园一路高新技术工业园 1 栋 No.1Build,Fuyong High-tech industry park, No.1 Fuyuan Road, Baoan District Shenzhen,China

电话 Tel:+86-0755-36695179

传真 Fax:+86-0755-36695180

邮箱 Email:sales@copocom.com

公司官网 Website: <http://www.copocom.com>

**MD附件**

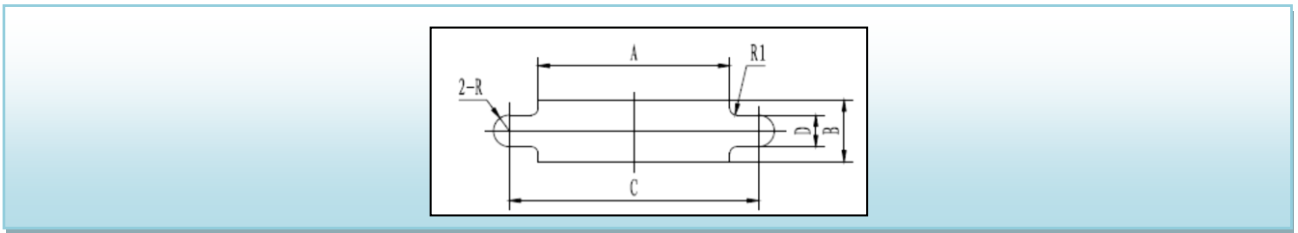
- MD附件有多种形式，可满足产品的安装与锁紧，用户可根据需要单独订货。
- 按照用途的不同MD附件分为两种类型：锁紧组件和安装组件。
- 锁紧组件一般在产品对接需要可靠锁紧时使用，其通常安装在甩线连接器的自由端，可用于基本型压接系列产品中。
- 安装组件用来将产品和安装面板或印制板固定在一起，其通常安装在甩线连接器的固定端和印制板安装系列产品中。

■ 附件结构安装尺寸图

型号	名称	外形图	结构尺寸图	安装示意图
MD-L1	锁紧组件		十字盘头螺钉M2×6 平垫圈M2 弹簧垫圈M2	
MD-P1	板前安装 安装组件			
MD-P2	直插印制板 安装组件			
MD-P3	MD-9/21/25/31/37 弯插印制板 安装组件			
MD-P4	MD-51 弯插印制板 安装组件			
MD-P5	MD-9/21/25/31/37 弯插印制板 安装组件			
MD-P6	MD-51 弯插印制板 安装组件			

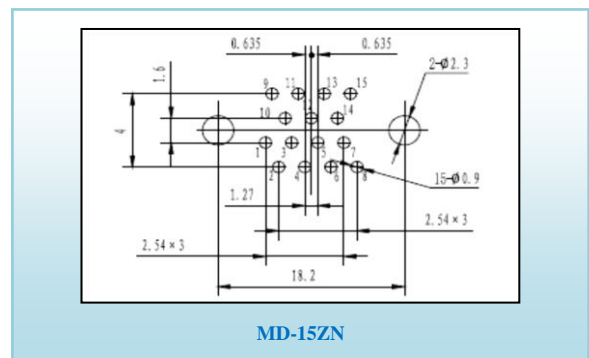
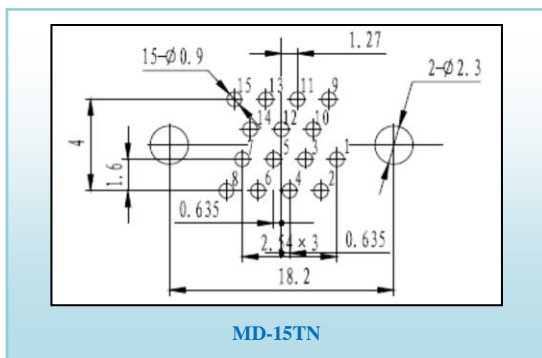
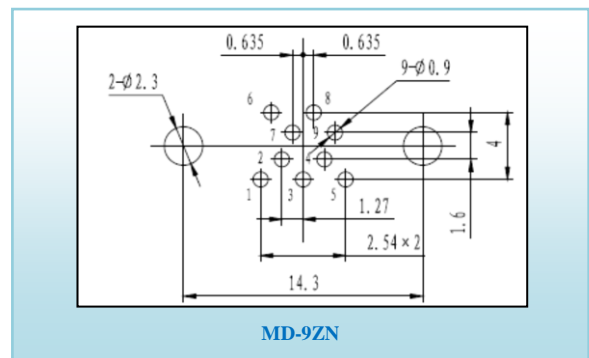
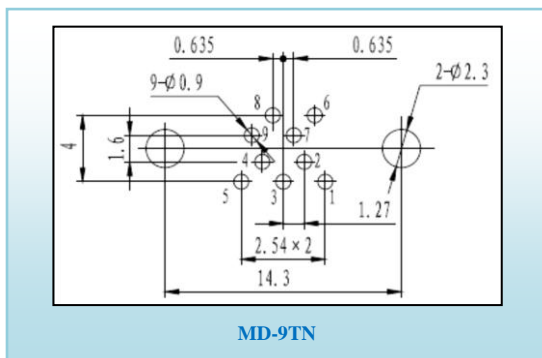
**MD 建议开孔尺寸**

■ 建议安装板开孔尺寸 (板前安装)

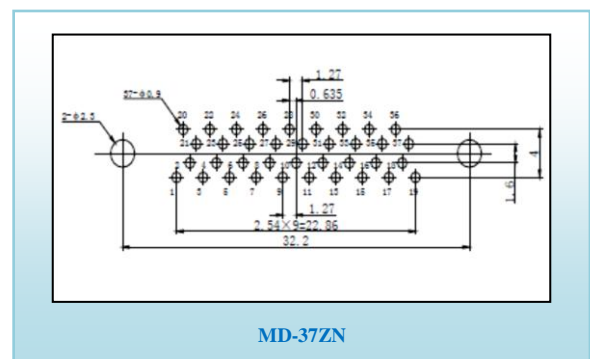
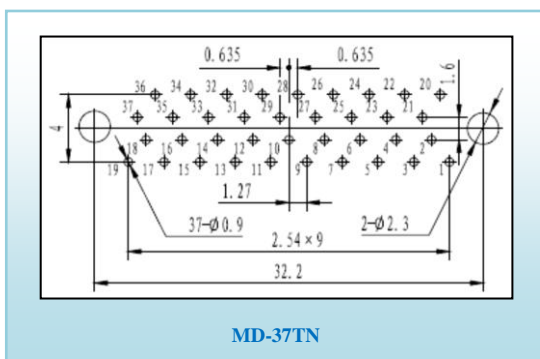
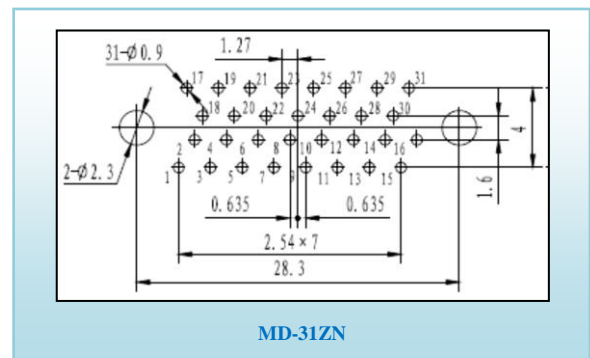
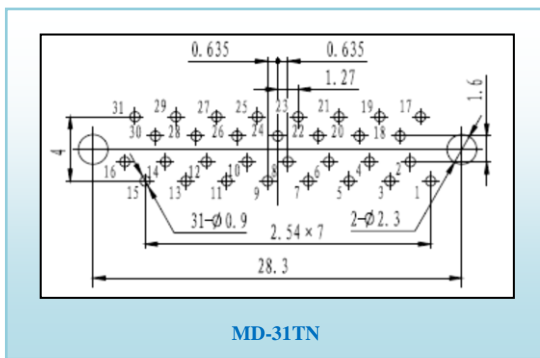
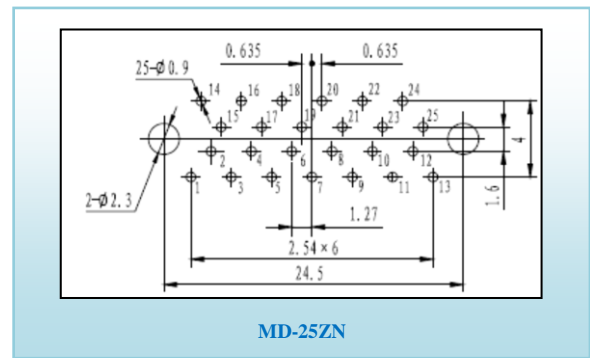
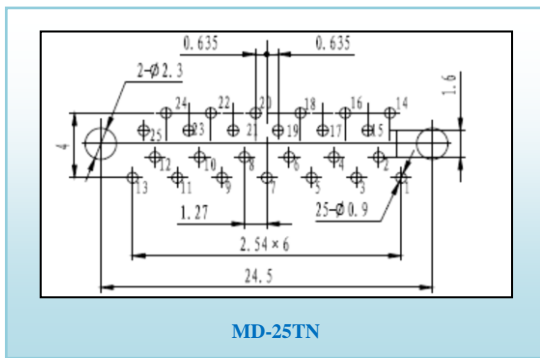
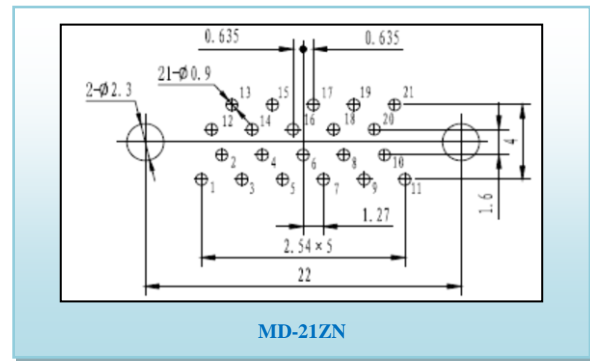
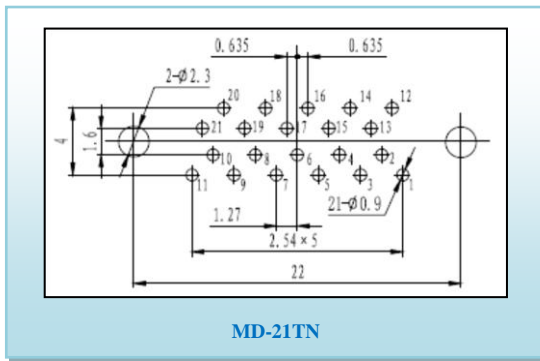


产品规格	A	B	C	D
MD-9T/Z	10.1	4.6	14.3	2.3
MD-15T/Z	14.2	4.6	18.2	2.3
MD-21T/Z	17.9	4.6	22	2.3
MD-25T/Z	20.8	4.6	24.5	2.3
MD-31T/Z	24.2	4.6	28.3	2.3
MD-37T/Z	28.2	4.6	32.2	2.3
MD-51T/Z	26.9	5.9	30.8	2.3

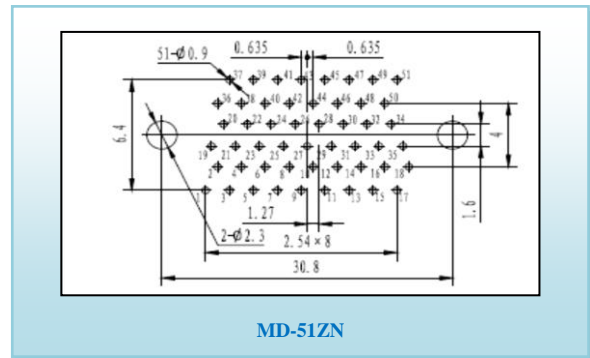
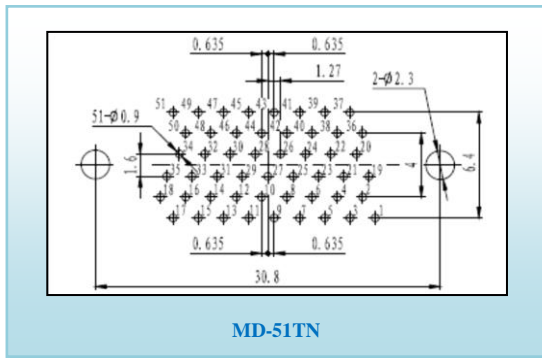
■ 建议印制板开孔尺寸 (直插印制板N型安装)



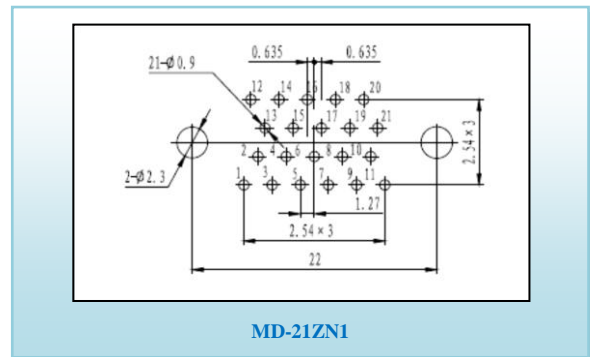
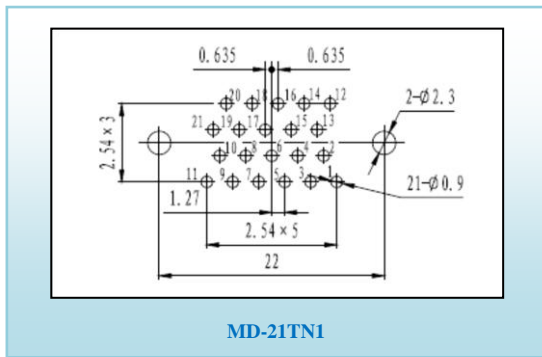
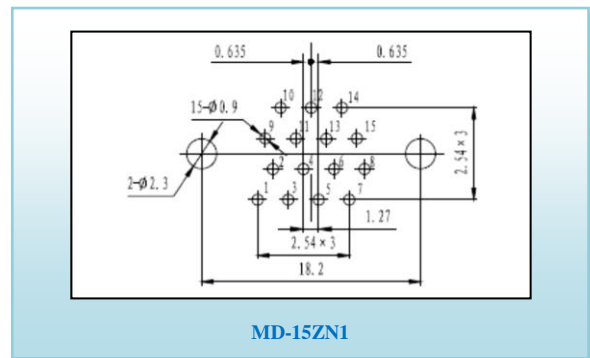
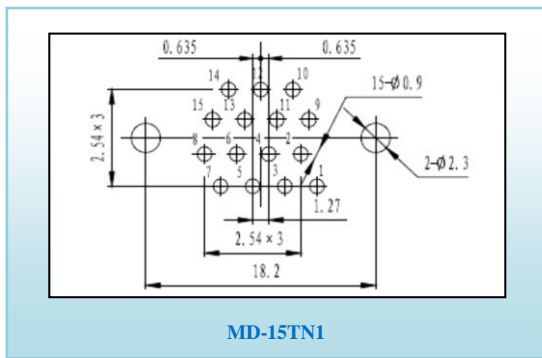
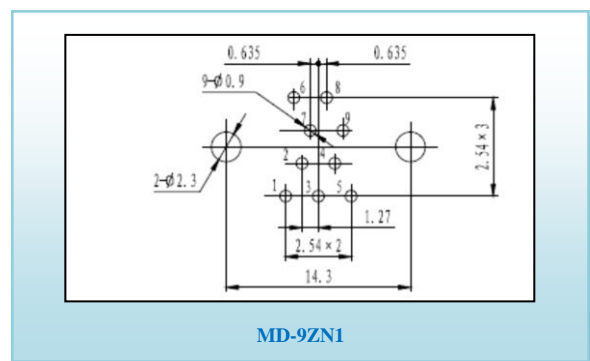
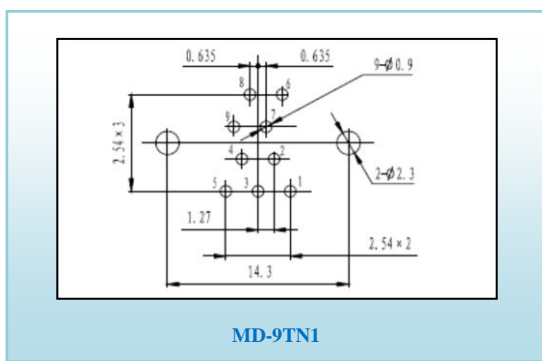


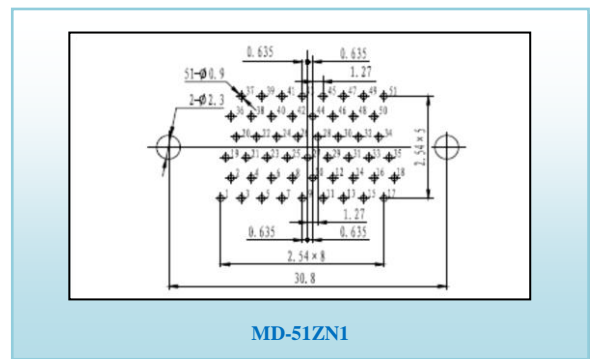
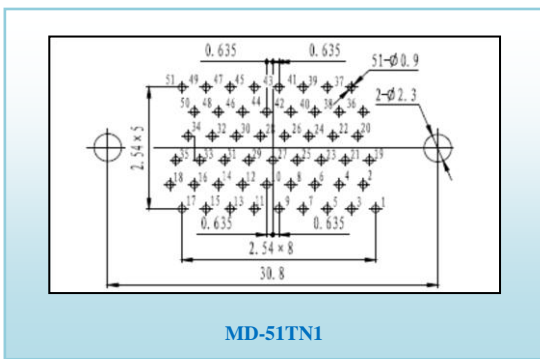
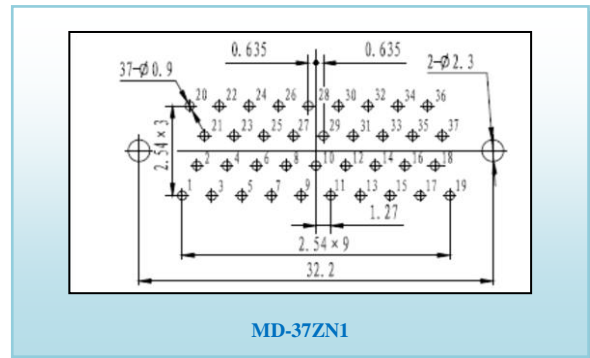
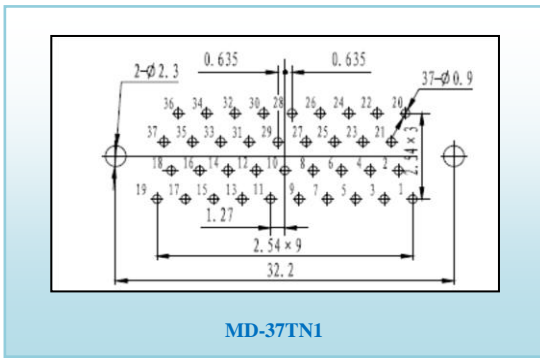
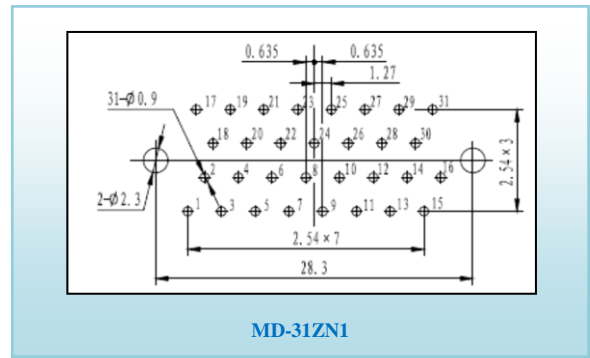
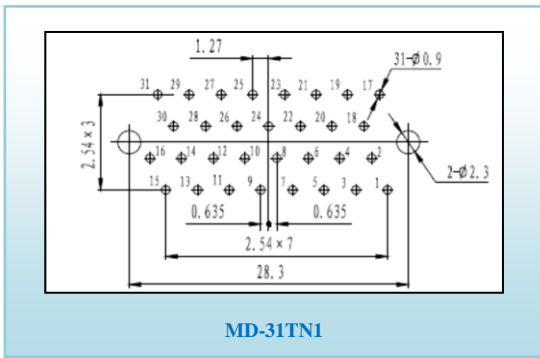
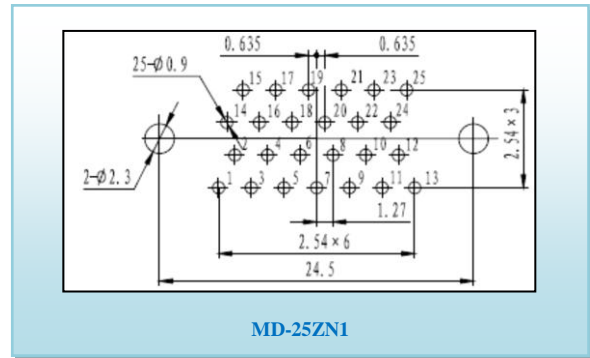
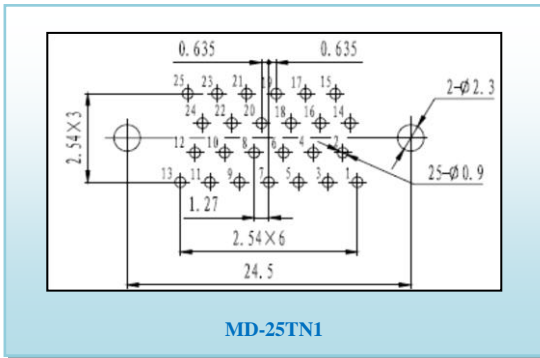


深圳市科宝讯电子有限公司 Shenzhen Copocom electronics co., Ltd  
 地址 Add: 深圳市宝安区福永街道福园一路高新技术工业园 1 栋 No.1Build,Fuyong High-tech industry park, No.1 Fuyuan Road, Baoan District Shenzhen,China  
 电话 Tel:+86-0755-36695179  
 传真 Fax:+86-0755-36695180  
 邮箱 Email:sales@copocom.com  
 公司官网 Website: <http://www.copocom.com>

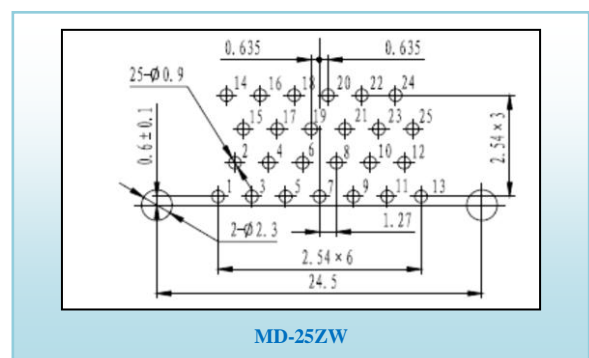
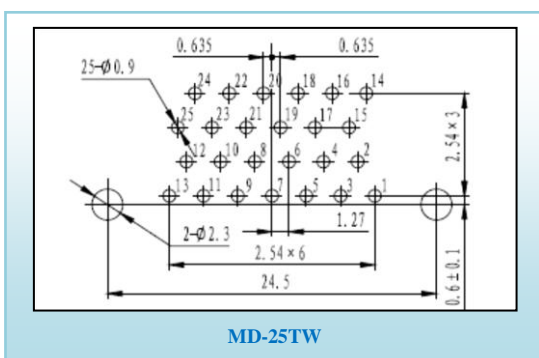
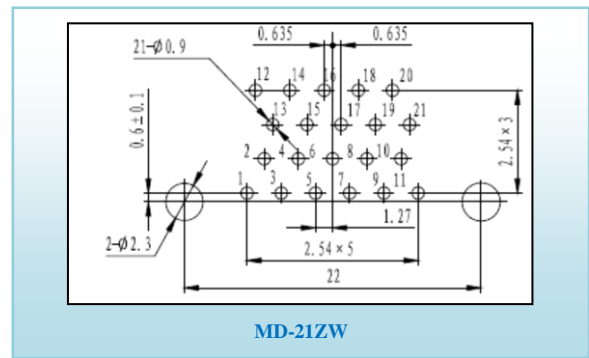
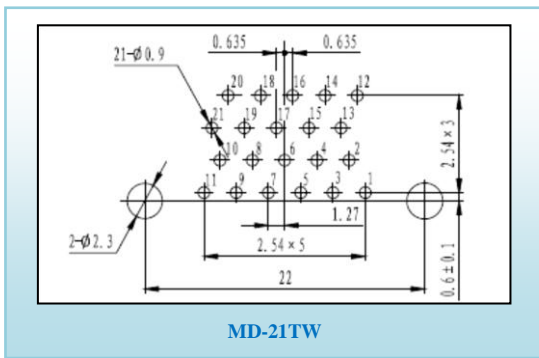
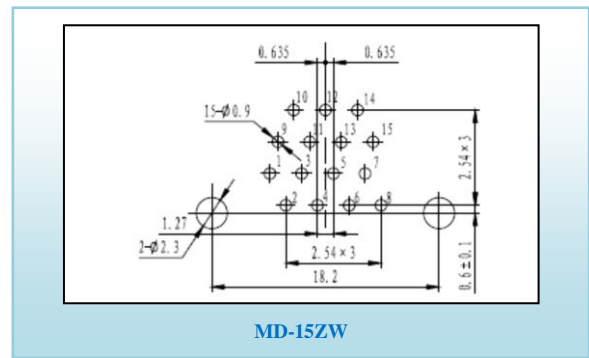
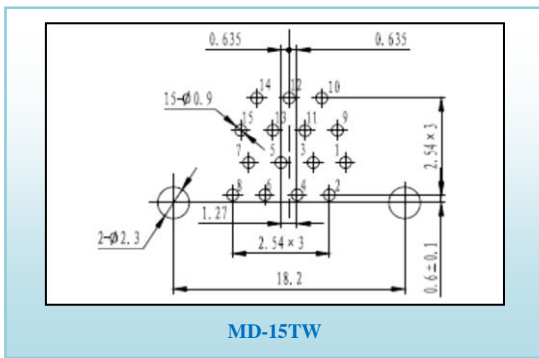
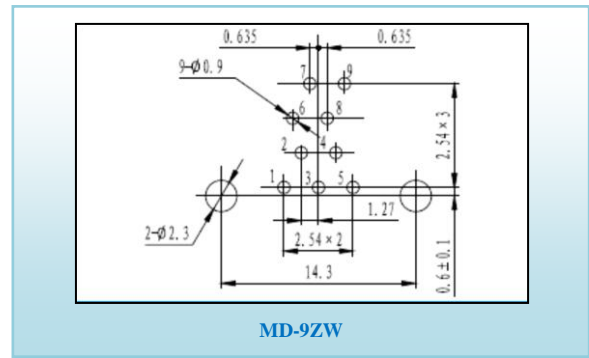
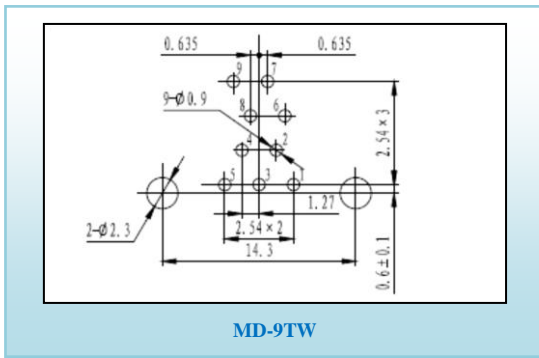


■ 建议印制板开孔尺寸 (直插印制板N1型安装)

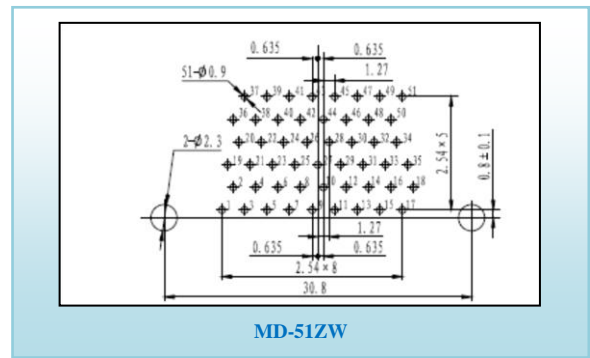
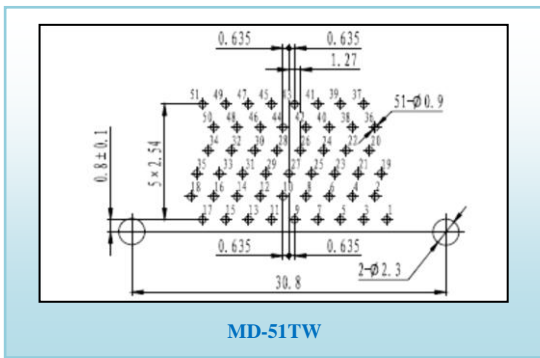
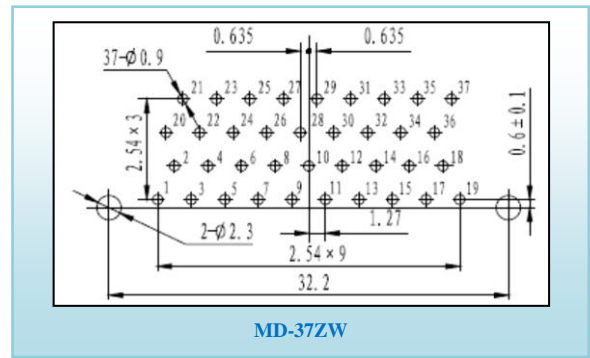
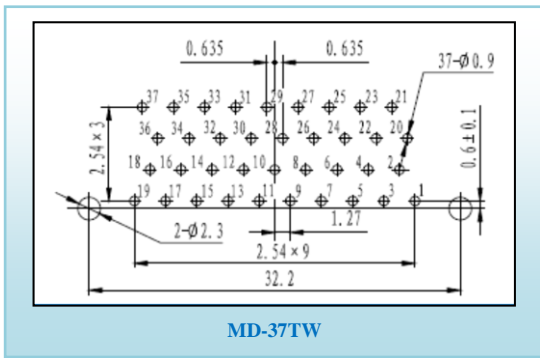
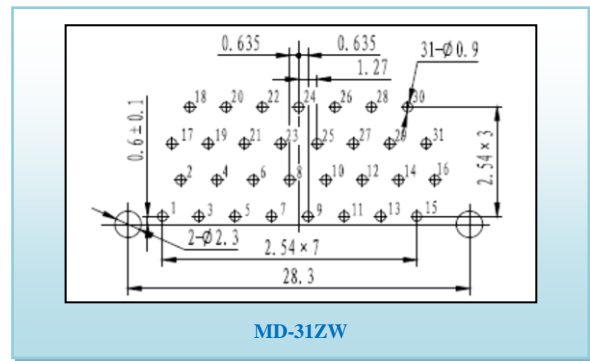
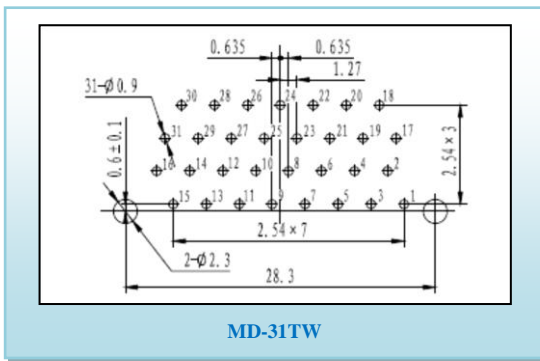




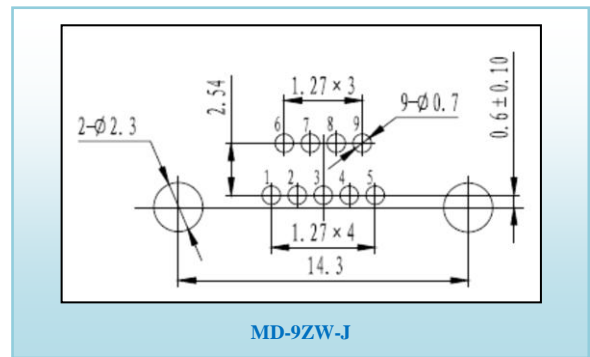
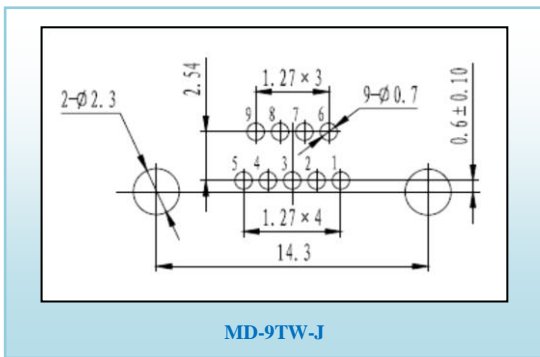
■ 建议印制板开孔尺寸 (直插印制板W型安装)



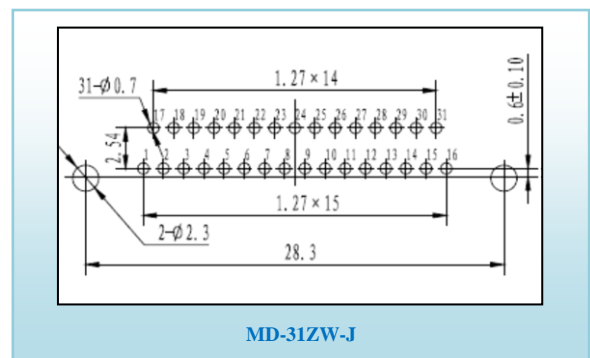
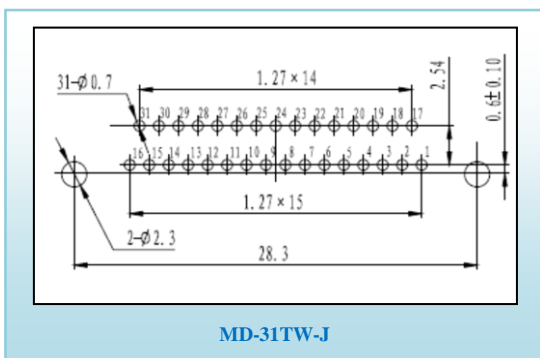
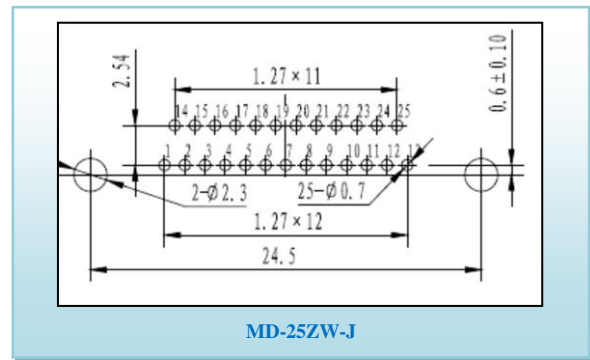
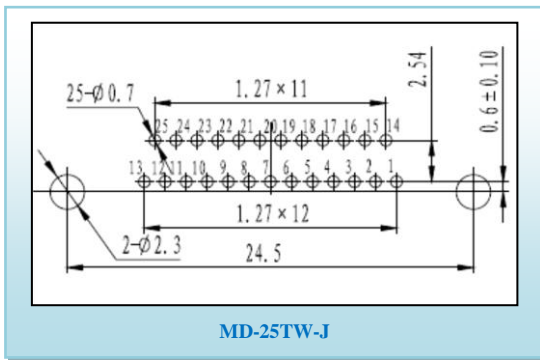
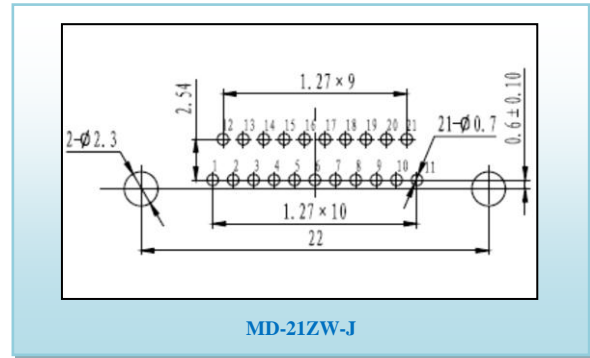
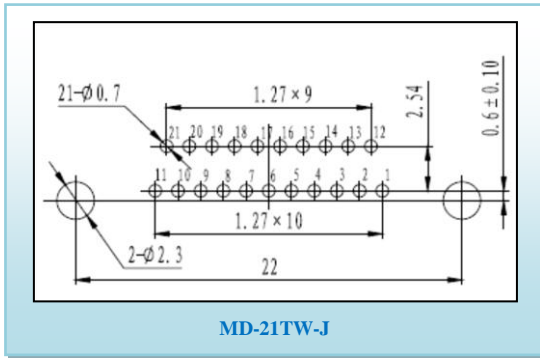
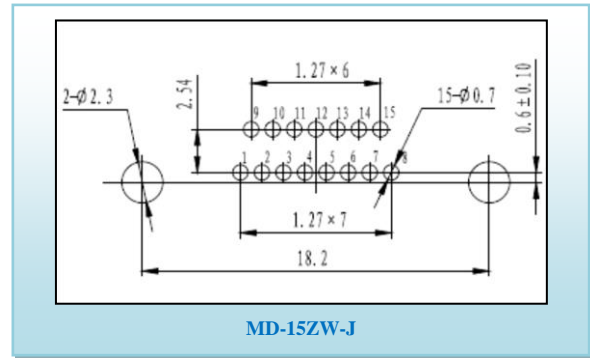
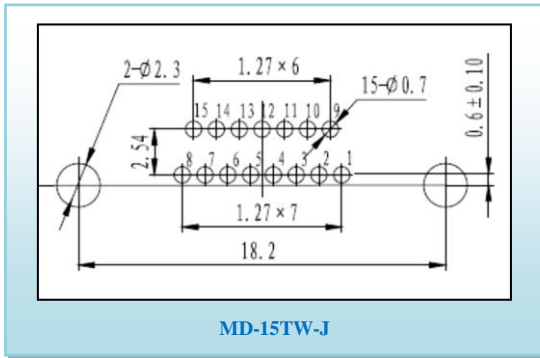
深圳市科宝讯电子有限公司 Shenzhen Copocom electronics co., Ltd  
 地址 Add: 深圳市宝安区福永街道福园一路高新技术产业园 1 栋 No.1Build,Fuyong High-tech industry park, No.1 Fuyuan Road, Baoan District Shenzhen,China  
 电话 Tel:+86-0755-36695179  
 传真 Fax:+86-0755-36695180  
 邮箱 Email:sales@copocom.com  
 公司官网 Website: <http://www.copocom.com>



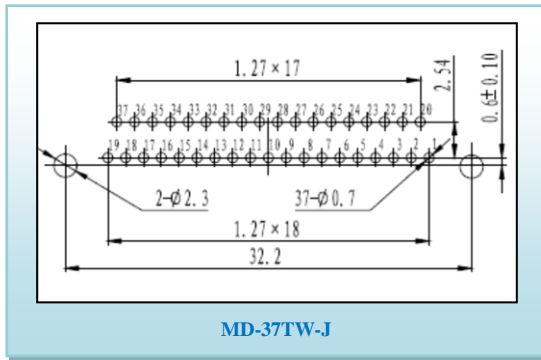
■ 建议印制板开孔尺寸 (直插印制板W-J型安装)



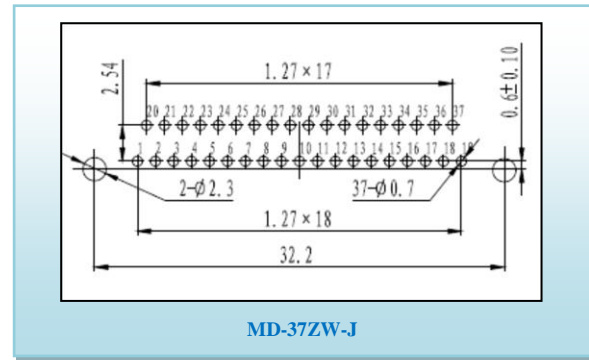
深圳市科宝讯电子有限公司 Shenzhen Copocom electronics co., Ltd  
 地址 Add: 深圳市宝安区福永街道福园一路高新技术产业园 1 栋 No.1Build,Fuyong High-tech industry park, No.1 Fuyuan Road, Baoan District Shenzhen,China  
 电话 Tel:+86-0755-36695179  
 传真 Fax:+86-0755-36695180  
 邮箱 Email:sales@copocom.com  
 公司官网 Website: <http://www.copocom.com>



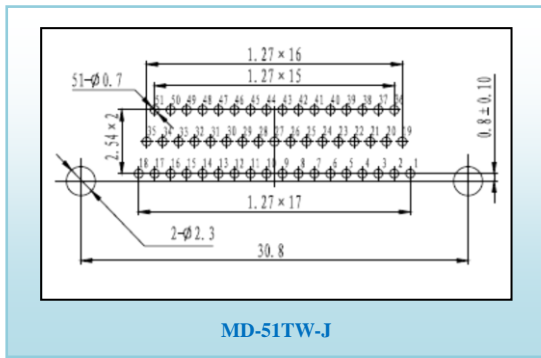
深圳市科宝讯电子有限公司 Shenzhen Copocom electronics co., Ltd  
 地址 Add: 深圳市宝安区福永街道福园一路高新技术产业园 1 栋 No.1Build,Fuyong High-tech industry park, No.1 Fuyuan Road, Baoan District Shenzhen,China  
 电话 Tel:+86-0755-36695179  
 传真 Fax:+86-0755-36695180  
 邮箱 Email:sales@copocom.com  
 公司官网 Website: <http://www.copocom.com>



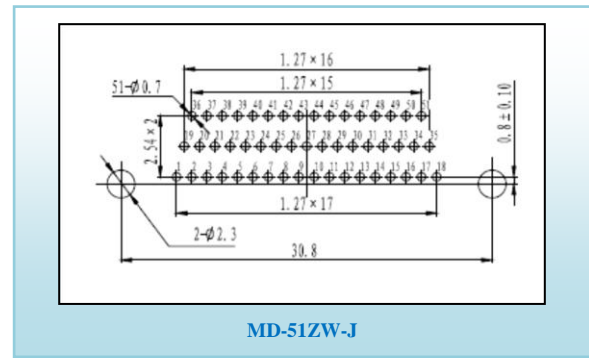
MD-37TW-J



MD-37ZW-J



MD-51TW-J



MD-51ZW-J